



FEFCO Style Box Designs:

The FEFCO code is the international system for classifying corrugated and cardboard box designs. It provides a universal language for packaging teams, suppliers, and manufacturers to identify specific structures.

This document offers a practical overview of the most common FEFCO styles—including 0200, 0201, 0203, 0204, 0207, 0215, 0216, 0217, 0400, 0401, 0403, 0410, 0421, 0426, 0427, 0444, and 0471. Below, you will find simple illustrations, key advantages, and potential drawbacks to help you quickly compare options for your business.

Choosing the Right Style

Before diving into the specific codes, it helps to narrow down your search based on your operational setup. The ideal design for your business will depend on five core factors:

- **Product Dimensions & Weight:** Does it need a reinforced bottom or overlapping flaps?
- **Packing Speed:** Are you packing manually (where crash-lock bottoms save time) or using automated lines?
- **Stacking Strength:** Will these be piled high in a warehouse or on a pallet?
- **Branding Goals:** Do you need smooth surfaces for custom printing or premium unboxing experiences?
- **Tooling Budget:** Are you willing to pay upfront die-cutting costs for complex shapes, or do you need a cost-effective standard size?

Quick Reference Guide

Use this guide to match the most common FEFCO categories:

Standard Shipping & Heavy Duty

- 0201 (Standard Slotted Carton): The industry go-to if low cost and high flexibility are your top priorities.
- 0200: Ideal for open-top storage or when using a separate, independent lid.
- 0203 & 0204: Feature overlapping flaps to provide extra structural strength for heavier goods.
- 0207: A practical, reinforced step up from a basic slotted carton.

Fast Assembly & Retail-Ready

- 0215 & 0216: Crash-lock bottom designs engineered to significantly improve packing line speed and efficiency.
- 0217: Includes a built-in carry handle, making it perfect for retail or promotional gift packs.
- 0444: Formed as an open display tray, ideal for shelf-ready retail goods.

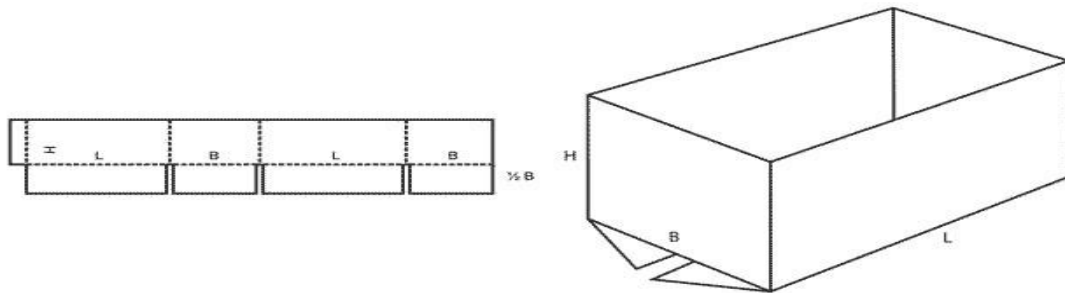
E-Commerce & Presentation Mailers

- 0427: The gold standard for e-commerce mailer boxes, offering excellent presentation and structural strength.
- 0421 & 0471: Compact folder-style designs that work beautifully for shallow products and slimline mailers.

Flat, Long, or Shallow Items

- 0400, 0401, & 0403: Protective, wrap-around folder styles designed specifically for flat items.
- 0410: A highly secure, elongated option tailored for long or narrow products.
- 0426: One of the most practical folder-type designs, frequently utilized for flat goods and food-style packaging.

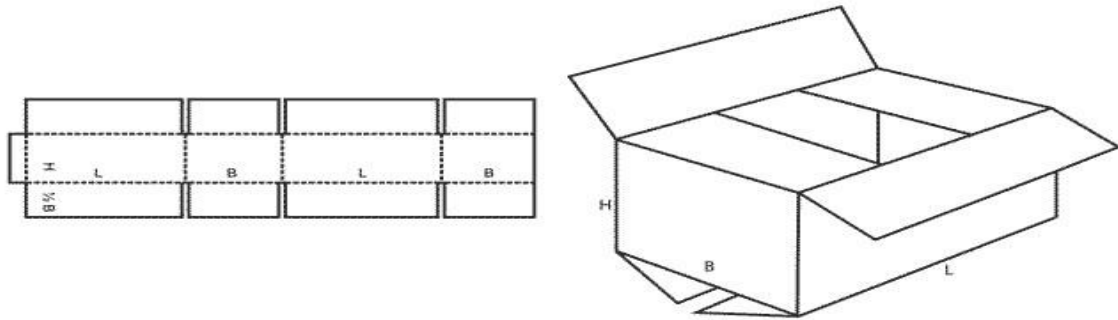
FEFCO 0200



FEFCO 0200 is a half slotted container (HSC), which means it has flaps on one side only and remains open at the top unless used with a separate lid. It is a simple corrugated cardboard box style often chosen for warehouse picking, shelf replenishment, and products that need easy top access. In Australia, this style can also align with searches for open-top cartons, stock boxes, and warehouse packing boxes.

- **Benefits:** Simple, cost-effective, easy to load from the top, and practical where a separate cover or lid is used.
- **Disadvantages:** Not fully enclosed on its own, offers less top protection, and usually needs a lid or stretch wrap for transit.
- **Typical uses:** Open-top storage cartons, warehouse bins, shelf-ready cartons, industrial packing, and wholesale cardboard boxes in Australia.

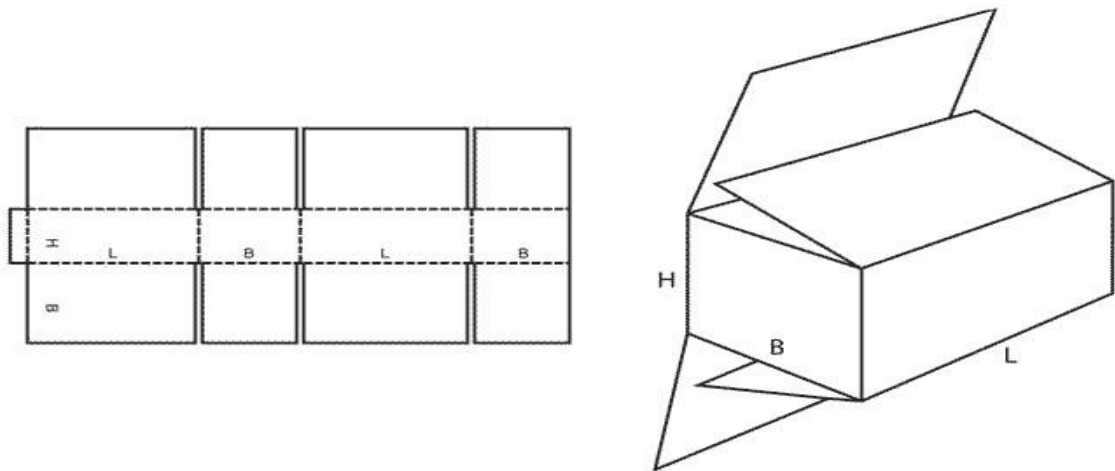
FEFCO 0201



FEFCO 0201 is the classic regular slotted container (RSC). It is made from a single piece of corrugated board with a glued or stitched manufacturer's joint, and the top and bottom flaps meet in the centre when closed. It is the most widely used corrugated shipping box style and is commonly sold in Australia as a cardboard shipping carton, stock carton, packing box, or moving box.

- **Benefits:** Very cost-effective, easy to manufacture, easy to assemble, available in many sizes, and suitable for a wide range of products.
- **Disadvantages:** Usually needs tape to close the top and bottom, and it may need inserts or stronger board for fragile or heavy products.
- **Typical uses:** General transit packaging, warehouse storage, retail distribution, e-commerce shipping, shipping cartons for online orders, and wholesale cardboard boxes for Australian businesses.

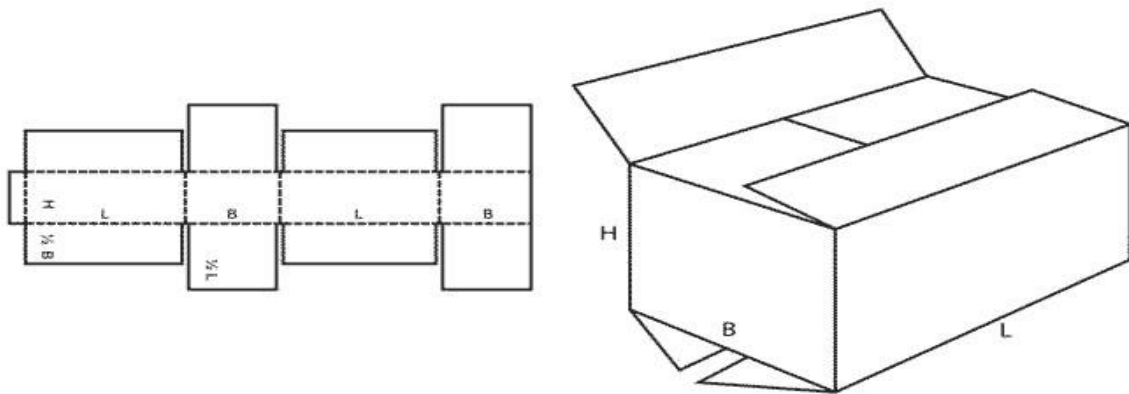
FEFCO 0203



FEFCO 0203 is a full overlap slotted container in which the outer flaps fully overlap when closed. This creates a double layer of board across the top and bottom, making it stronger than a standard 0201. It is commonly used for heavier products, fragile goods, and shipping cartons where extra compression strength is needed. Australian buyers may also search for this style as a heavy-duty cardboard box or reinforced shipping carton.

- **Benefits:** Stronger top and bottom protection, better stacking support, and improved cushioning for heavier products.
- **Disadvantages:** Uses more corrugated board than a regular slotted carton and usually costs more per unit.
- **Typical uses:** Heavy products, fragile goods, industrial parts, export cartons, and reinforced cardboard shipping boxes.

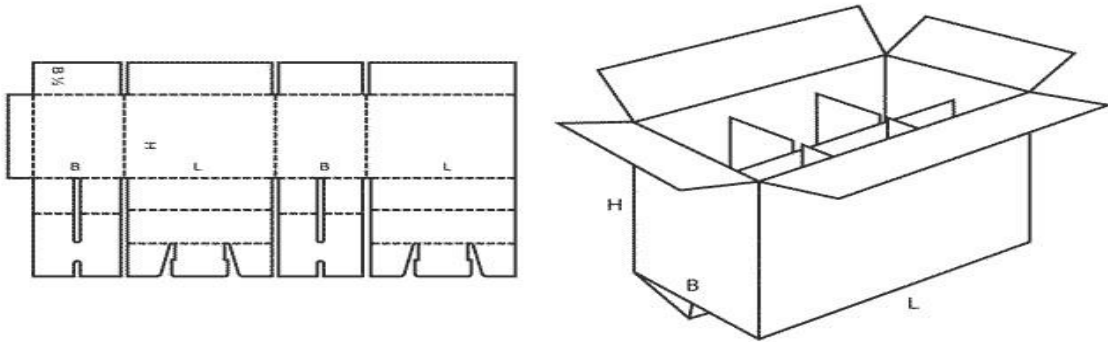
FEFCO 0204



FEFCO 0204 is another full overlap slotted-style carton designed for maximum top and bottom flap coverage. It is suitable when a standard shipping carton needs more protection, stability, or puncture resistance during transport. In Australian packaging searches, it may match terms like heavy-duty corrugated boxes, export cartons, and protective cardboard shipping boxes.

- **Benefits:** High protection, improved flap strength, and useful for products that need stronger top and bottom support.
- **Disadvantages:** More board usage than basic cartons, greater shipping weight, and typically higher packaging cost.
- **Typical uses:** Industrial packaging, heavy freight cartons, fragile goods, warehouse shipping, and export packaging boxes.

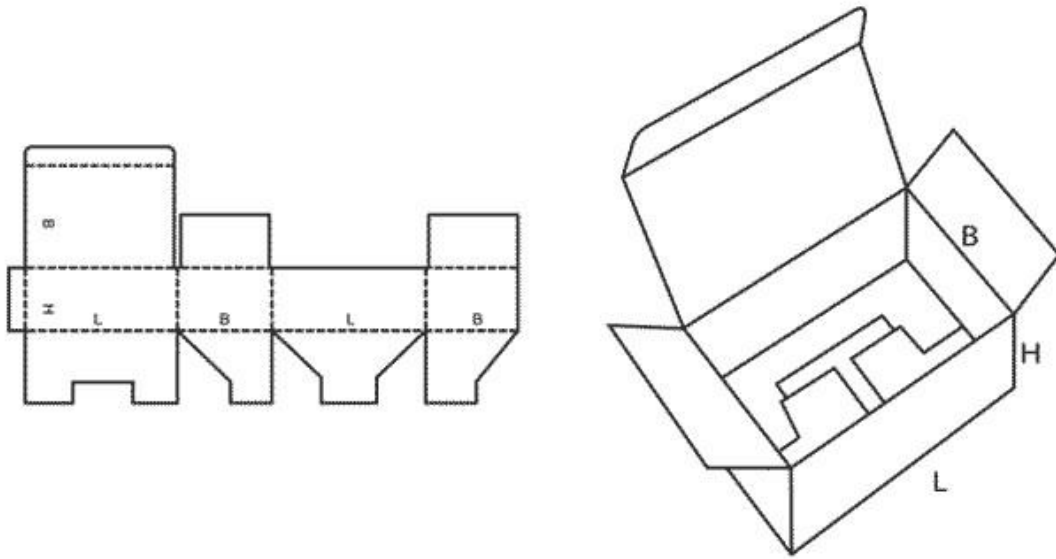
FEFCO 0207



FEFCO 0207 is a slotted-type corrugated carton variation that provides additional flap coverage and improved protection compared with a simple regular slotted carton. It is often considered where better closure strength or extra product support is needed without moving to a more premium folder-style mailer. In Australia, this can relate to searches for protective cardboard cartons, stronger shipping boxes, and corrugated packing cartons.

- **Benefits:** Better product protection than very basic cartons, practical slotted design, and suitable for transport packaging that needs more flap support.
- **Disadvantages:** Less common than 0201, can use more material, and may be less economical for general-purpose box supply.
- **Typical uses:** Protective transit cartons, warehouse boxes, industrial cardboard packaging, and shipping cartons for products needing extra support.

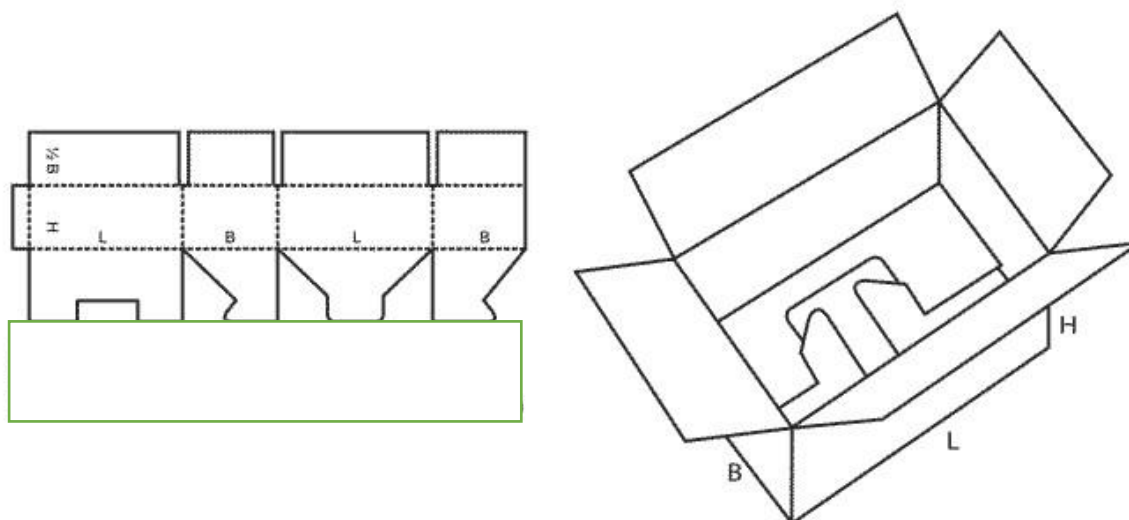
FEFCO 0215



FEFCO 0215 is a side-glued die-cut carton with a tuck-in top and a push-lock base. It is designed for fast manual setup and often does not require taping, which makes it suitable for retail-ready packaging, point-of-sale packs, and e-commerce cartons. Australian businesses may also search for this style as a tuck-top box, lock-bottom carton, or retail display box.

- **Benefits:** Quick to erect, often no tape needed, neat presentation, and suitable for retail or shelf-ready applications.
- **Disadvantages:** More complex than basic slotted cartons and can be less economical for simple bulk shipping.
- **Typical uses:** Retail cartons, display packs, e-commerce packaging, gift boxes, and custom printed tuck-top boxes.

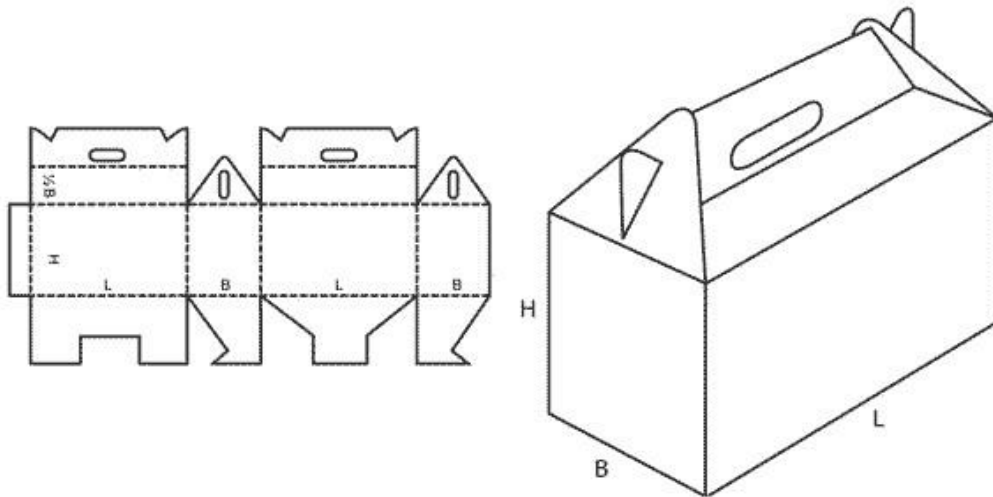
FEFCO 0216



FEFCO 0216 is similar to a standard slotted carton from the top, but it uses a snap-lock or push-lock bottom. This makes it faster to erect than a basic 0201 while still retaining a familiar top closure format. In Australian packaging searches, this style is often associated with quick-assemble shipping cartons, e-commerce boxes, and corrugated packing boxes for fulfilment operations.

- **Benefits:** Faster packing, reduced need for bottom tape, stronger base than simple manually folded flaps, and efficient for higher-volume packing lines.
- **Disadvantages:** Slightly more material than 0201, more complex die-cutting, and typically higher unit cost than a plain RSC.
- **Typical uses:** E-commerce fulfilment, retail distribution, food and beverage packing, medium-weight products needing quicker setup, and shipping boxes for online businesses in Australia.

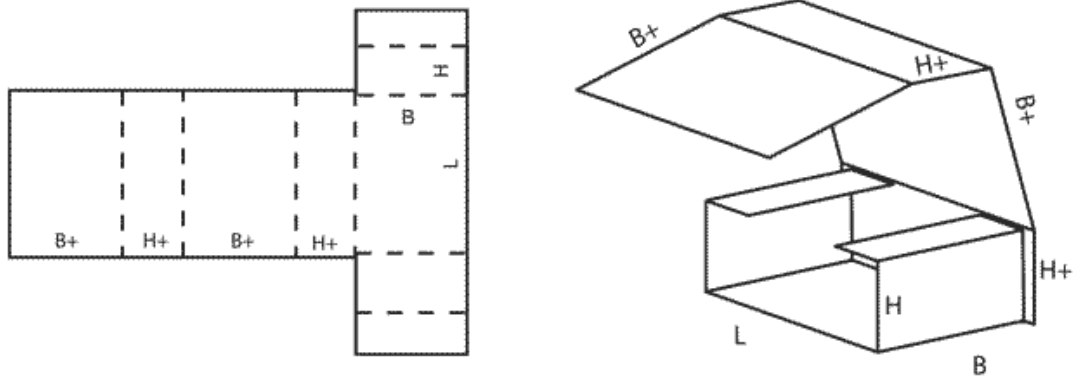
FEFCO 0217



FEFCO 0217 is a snap-bottom carton with an integrated carry handle at the top. It combines convenient manual erection with easy portability, making it a useful option for retail packs, promotional gift sets, and products that customers carry by hand. In Australian packaging searches, this may also match carry handle boxes, takeaway carry cartons, and retail gift packaging.

- **Benefits:** Easy to carry, distinctive retail presentation, strong base, and useful for branded packaging.
- **Disadvantages:** Not ideal for very heavy contents, requires more complex die-cutting, and is less universal than standard cartons.
- **Typical uses:** Retail packs, promotional boxes, gift packaging, bulky consumer products, and cardboard carry boxes.

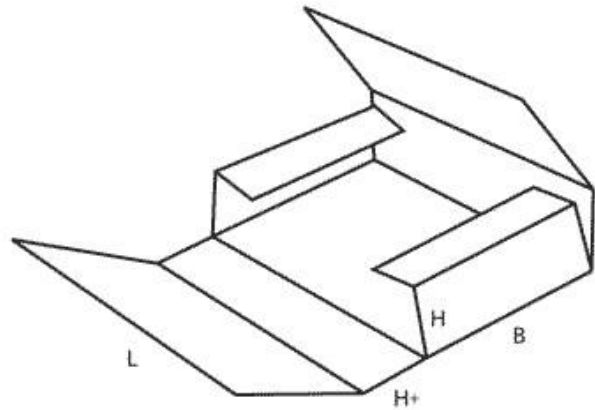
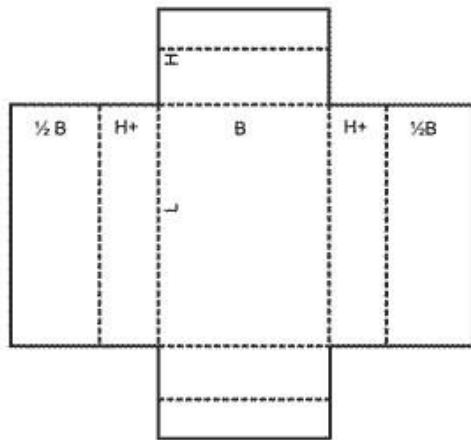
FEFCO 0400



FEFCO 0400 is a one-piece folder made from a single sheet of corrugated board that folds around the product. It is often used for flat, thin, or rectangular items where surface protection matters more than full box depth. Australian buyers may search for this as a cardboard wrap, flat product mailer, or protective folder-style carton.

- **Benefits:** Efficient use of material, easy wrapping format, good for flat product protection, and stores flat.
- **Disadvantages:** Limited height capacity and less suitable for bulky or irregular items.
- **Typical uses:** Books, documents, picture frames, flat e-commerce products, and cardboard mailers for slim goods.

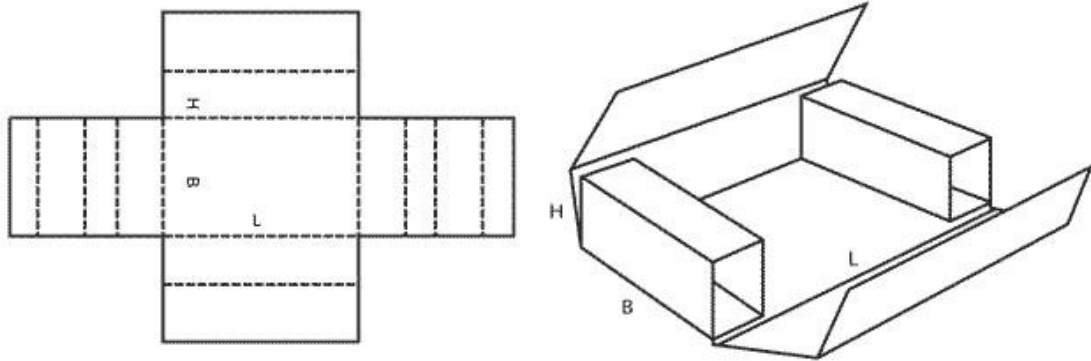
FEFCO 0401



FEFCO 0401 is a one-piece folder variation that folds around a product width-wise, giving broad surface coverage and simple protection. It is suitable for books, printed materials, picture frames, and flat retail items. In Australian web searches, it may connect with flat cardboard mailers, book wraps, document packaging, and protective cardboard folders.

- **Benefits:** Good surface protection, compact design, efficient storage, and well suited to flat products.
- **Disadvantages:** Not ideal for tall or bulky items and can need additional cushioning for fragile goods.
- **Typical uses:** Books, stationery, printed materials, framed products, flat packs, and document mailers.

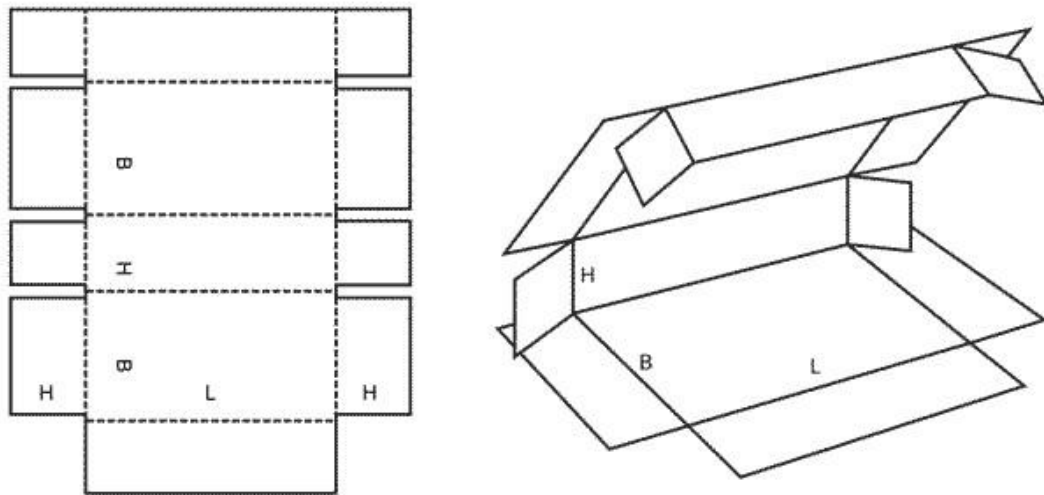
FEFCO 0403



FEFCO 0403 is a one-piece folder with end buffers, giving extra protection at the ends and edges of the packed item. This makes it useful for fragile or premium flat products that need better corner and impact resistance during handling. Australian packaging buyers may also search for this type as buffered cardboard mailers, protective flat pack cartons, or edge-protection packaging.

- **Benefits:** Extra edge and corner protection, improved transit safety, and well suited to delicate flat products.
- **Disadvantages:** Usually requires die-cutting, can cost more than simpler folders, and is less flexible for mixed product sizes.
- **Typical uses:** Picture frames, printed products, electronics panels, fragile flat goods, and premium protective mailers.

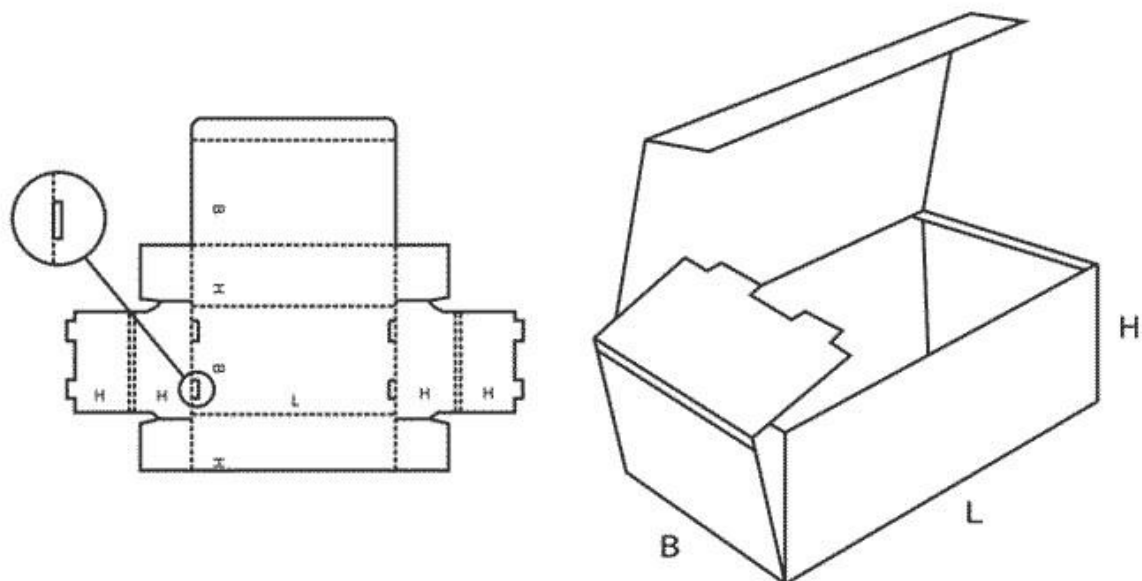
FEFCO 0410



FEFCO 0410 is a five-panel folder designed to wrap around long or narrow products. It provides broad coverage and helps protect elongated items that do not fit well into regular rectangular cartons. In Australia, this style can relate to searches for long cardboard boxes, tube alternatives, poster boxes, and packaging for rails, trims, or narrow components.

- **Benefits:** Excellent for long products, efficient wrap-around protection, and useful where a standard carton would waste space.
- **Disadvantages:** Less versatile for general packaging, often more specialised, and may need careful sizing for secure closure.
- **Typical uses:** Long retail products, trims, rails, posters, narrow industrial parts, and custom cardboard wraps for elongated goods.

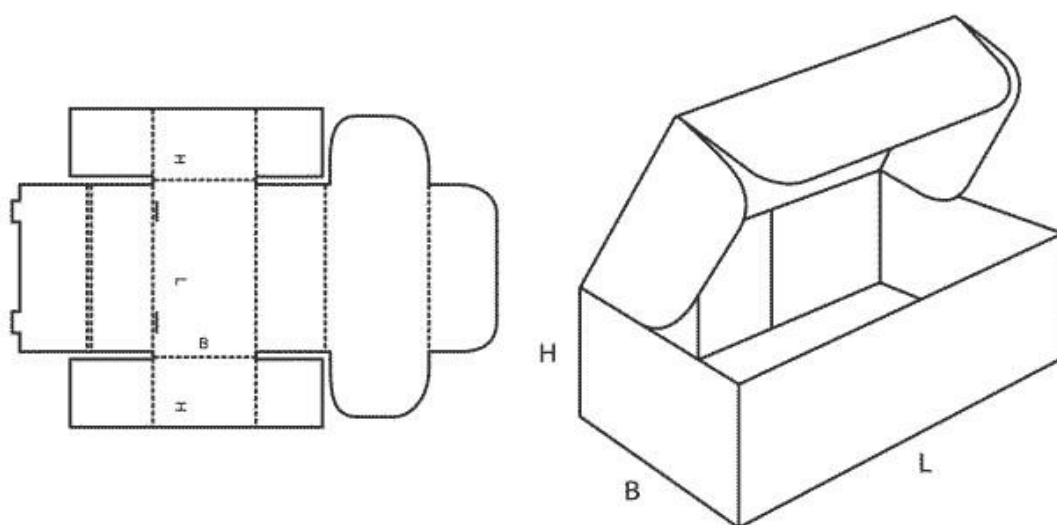
FEFCO 0421



FEFCO 0421 is a folder-type carton made from one piece of board. It generally forms a tray with side walls and an attached hinged lid. Because the sides overlap, it can offer good compression strength for shallow packs and presentation-oriented packaging. In Australia, this style can also align with searches for presentation boxes, product packaging boxes, and custom cardboard packaging for retail display.

- **Benefits:** Neat appearance, often no additional sealing needed, strong overlapping side construction, and good for display or presentation.
- **Disadvantages:** Best suited to shallower products, and the lid usually performs better when the packed item fills the box well.
- **Typical uses:** Retail packs, display packs, presentation boxes, product packaging, branded packaging, and custom printed boxes for premium goods.

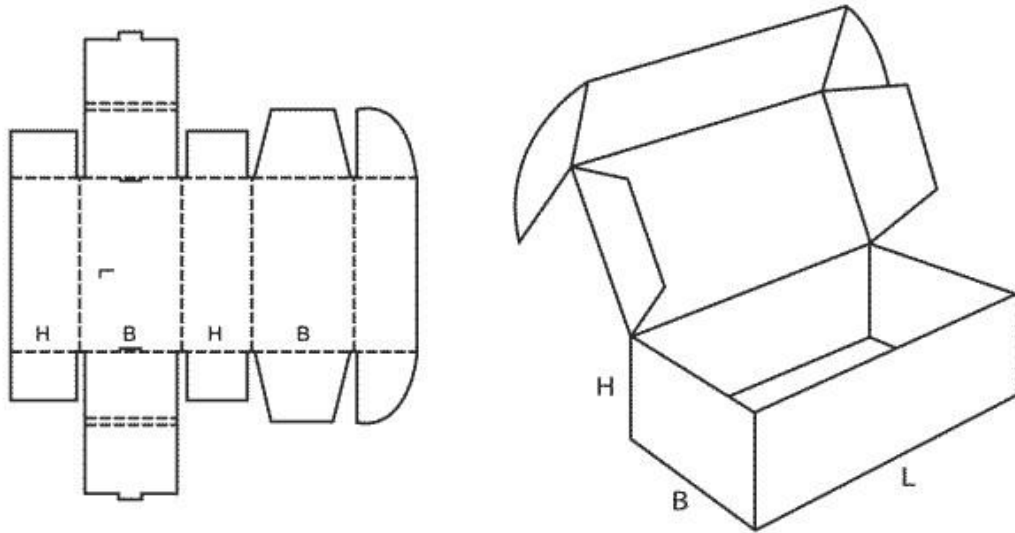
FEFCO 0426



FEFCO 0426 is a self-locking folder-type box with an attached lid, commonly recognised as a pizza-style box. It is easy to assemble, ships flat, and works well for flat or shallow products that benefit from quick manual setup. In Australian web searches, it may also match terms such as pizza boxes, takeaway packaging, flat mailer boxes, cardboard food boxes, and custom printed packaging boxes.

- **Benefits:** Quick assembly, good flat-pack storage efficiency, familiar user-friendly design, and well suited to printing and branding.
- **Disadvantages:** Not ideal for tall items, less flexible than a general-purpose slotted carton for mixed product sizes, and may need careful sizing for secure closure.
- **Typical uses:** Pizza and takeaway packaging, flat retail products, printed mailer packs, lightweight goods, and food packaging boxes used by Australian businesses.

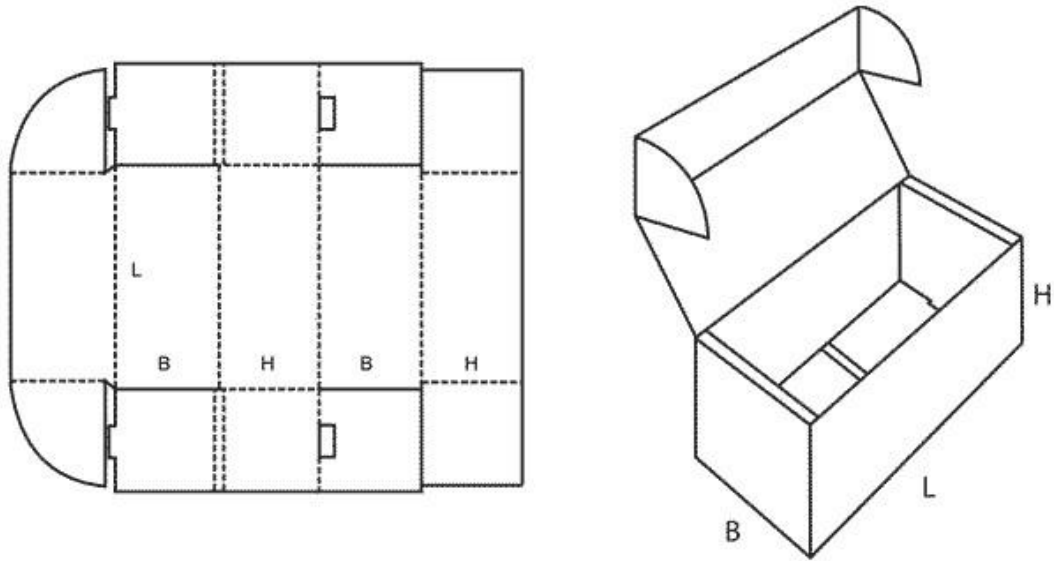
FEFCO 0427



FEFCO 0427 is a popular mailer-style die-cut box, often called a roll-end tuck-top box. It folds from one piece of board into a rigid self-locking structure and is commonly used where both protection and presentation are important. This is one of the most relevant styles for Australian searches around mailer boxes, custom mailer boxes, subscription boxes, postage boxes, and e-commerce packaging.

- **Benefits:** Attractive unboxing experience, strong structure, self-locking closure, good protection for smaller goods, and ideal for branding.
- **Disadvantages:** Usually requires die-cut tooling, can cost more than standard slotted cartons, and may be excessive for simple low-value transit packs.
- **Typical uses:** Subscription boxes, gift packs, electronics accessories, cosmetics, retail mailers, premium e-commerce orders, and custom printed mailer boxes in Australia.

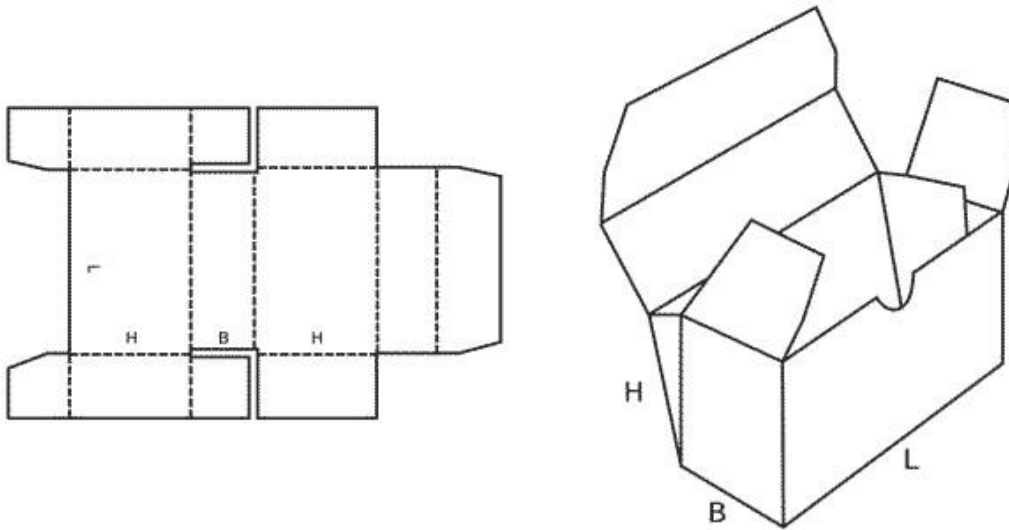
FEFCO 0471



FEFCO 0471 is a folder-type tray with self-locking walls and a hinged lid. It is often used as a compact mailer or for shipping small components because it provides good protection while remaining relatively efficient in material use. Australian buyers may find it relevant when searching for compact corrugated mailers, small cardboard boxes, product mailers, or protective packaging boxes.

- **Benefits:** Good protection, compact and tidy format, low manufacturing waste, flat-pack storage, and optional locking tabs that can reduce the need for tape.
- **Disadvantages:** Can be more difficult to assemble if very thick corrugated board is used, and usually requires die-cut production.
- **Typical uses:** Small components, spare parts, samples, compact retail packs, mailer-style deliveries, and protective packaging for e-commerce products.

FEFCO 0444



FEFCO 0444 is a rigid tray style designed to hold products securely in an open or semi-open tray format. It is useful for display, storage, and product grouping where fast access is more important than full enclosure. In Australian searches, it may overlap with terms like cardboard trays, shelf display trays, retail display packaging, and parts storage trays.

- **Benefits:** Stable tray structure, easy product access, effective for display, and useful for organising multiple items.
- **Disadvantages:** Open-top design gives limited dust or transit protection and is less suitable for sealed shipping.
- **Typical uses:** Retail display trays, shelf-ready packaging, warehouse parts trays, grouped products, and cardboard storage trays.